



Product news

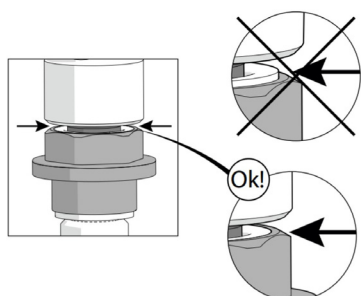


Service advice



Safety advice

Cylinder quick coupling



To eliminate the risk for incorrect connection, a check has been added when connecting a regulator with quick coupling to the cylinder:
“Check that the connection is properly locked by checking that the surfaces are in line with each other.”
The same instruction applies when connecting compressor fill hoses with quick coupling to cylinders.



#Cylinder quick coupling

Worn out cylinder adapters

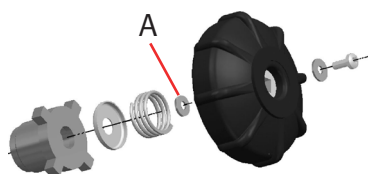


The cylinder valve adapter, used with the cylinder quick coupling, shall be inspected for damages after use. Adapters with damages (as shown on the image) must be replaced with new adapters.
Part number: 33543-51



#Cylinders with quick coupling

Cylinder valve safety ratchet correction



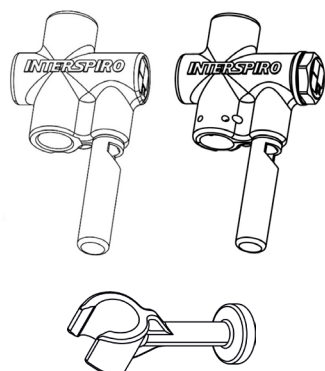
Some cylinder valves have a safety ratchet mechanism to prevent unintentional closing. We have identified a potential problem on some "Type I" and "Type II" cylinder valves with "press-to-close" safety ratchet

If the safety ratchet does not work (i.e. handwheel can be closed just by turning), you should order the correction kit. This kit includes 10 pcs of a new washer (A) together with an assembly instruction.
Part number: 460200183.



#Cylinder valve, Type I & Type II

New whistle design and new sealing plug



The warning whistle has a modified design with a new, visible nut. No changes are made to the function, service or part numbers of complete units.
Part number (spare part): 34850-51

There is a new whistle sealing plug available with improved sealing properties.
Part number: 34830-51.



#Incurve

#QS II

#Spiromatic 90U